

WeekEnd House

Long Island New York 1997

CRAIG KONYK
 New Jersey Institute of Technology
 Parsons School of Design



Site

The promise of the prefabricated industrial house has long been a preoccupation of modern American architects. Precedents exist in the work of Frey, Schindler, and Neutra (fig. 1). It is in the spirit of these ideas that the design for a weekend house in

Long Island New York was undertaken, to create a structure out of preexisting technologies and methods of fabrication.

An aluminum I-beam structure (fig. 2) implicates the enclosure for the building. Floor and wall panels and framed glass infill the aluminum frame according to programmatic concerns of view and privacy. The frame is left open at the rooftop to create a screened-in "room" when desired. The exterior wall system utilizes prefabricated structural insulated panels, the same technology found in walk-in freezers (fig. 3). Layers of oriented strand board sandwich rigid polystyrene foam. Interior floors and walls are designed to sectionally float within the framed space.

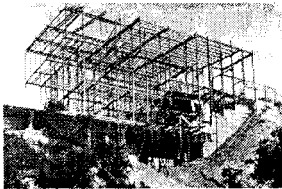


Fig. 1

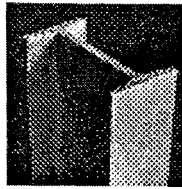


Fig. 2

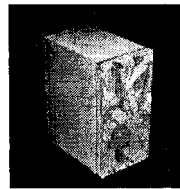
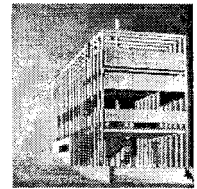
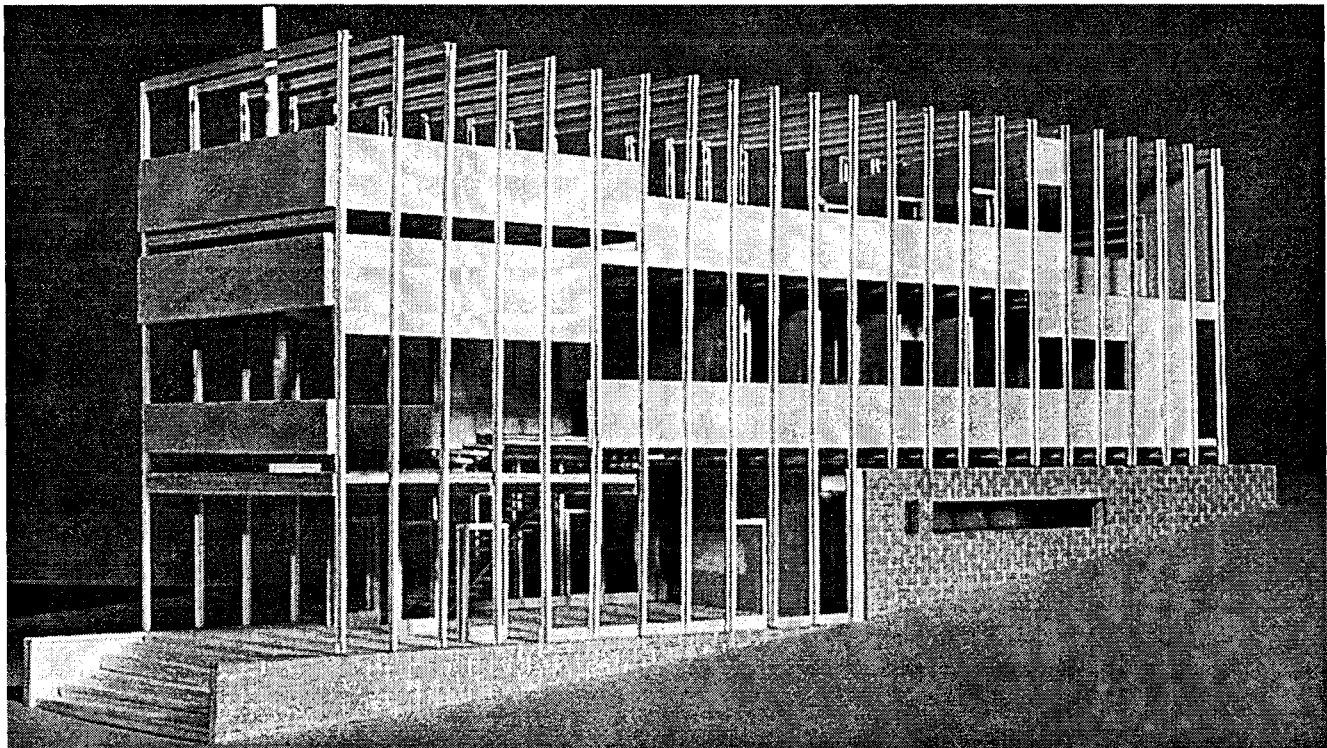
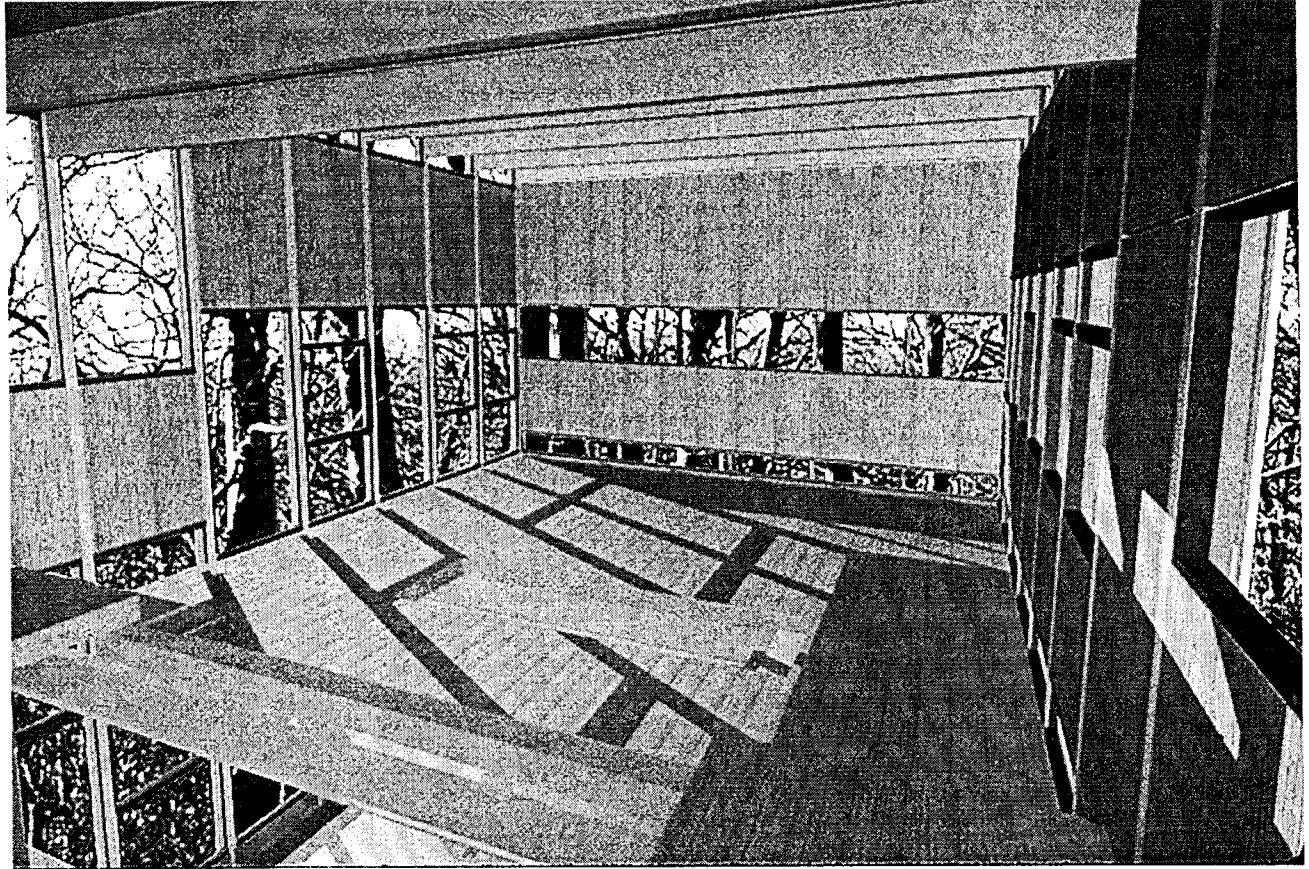


Fig. 3



Model views





View of site through main living space.

Sectional cut.

