

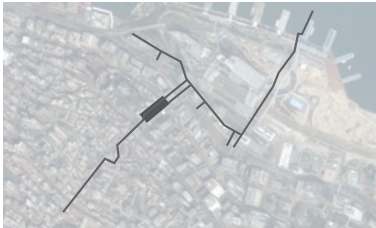
Hong Kong Express

Jennifer Lee Michaliszyn
Wentworth Institute of Technology

HONG KONG EXPRESS explored the architecture and urbanism of Hong Kong through the medium of film, and experimented with the use of short movies as the generator for architectural design. We began the semester with a study of the work of Hong Kong filmmaker Wong Kar-wai. Wong's movies are characterized by the use of devices such as repetitive loops of scenes and music, stop-motion and narrowly framed views. Devices that he masterfully uses to capture the tight spaces, textured layers and speed that characterize that city. Wong's work is also marked both by the energy and ebullience for the future characteristic of new(er) economies, and also (or because of its constant re-generation,) a nostalgia for the recent past. While in Hong Kong, the students recorded their site observations through the making of very short digital movies. The students worked with sites (including the Central Market) where the layers of Hong Kong's many (short) lives are particularly perceivable. The translation of those movies into conceptual and spatial physical models guided the development of a specific program framed loosely as "Spaces for the Recent Past."

Hong Kong's Central Market is located in the central business district of Hong Kong, home to all major financial and government institutions. It lies at the base of the Mid-level escalators, the world's longest open air escalator, and plugs into the multi-level public infrastructure of a vast footbridge network and the upper level of several shopping malls. It is possible to disembark the cross-harbor ferry and walk to and through the Central Market all the way to the mid-levels without once touching the traditional street. The Central Market building housed a wet market (meat and vegetables) for over sixty years before it was shuttered 2003. The modernist concrete steel frame building was built in 1939, its footprint is the size of an American football field and it stands three and a half stories tall. The site has hosted a marketplace for over a century; the current building is the fourth to occupy the site. Earlier buildings were built and demolished in 1842, 1857 and 1895. Furthermore, it lies on the old boundary between Central and Sheung Wan, the former European and Chinese settlements. In the late eighties and nineties, the building was connected to the podium level public network that connects Central and the Mid-level escalators. After standing vacant for almost ten years, the building was slated for demolition and redevelopment. However, the public passageway was sealed off from the abandoned building and remained in use. The Central Market has been the subject of the city's public discourse on authenticity in the urban realm, and the site of opposing claims to public space.

HONG KONG EXPRESS was a graduate design research studio conducted at [Institution] in the fall semesters of 2011 and 2012.

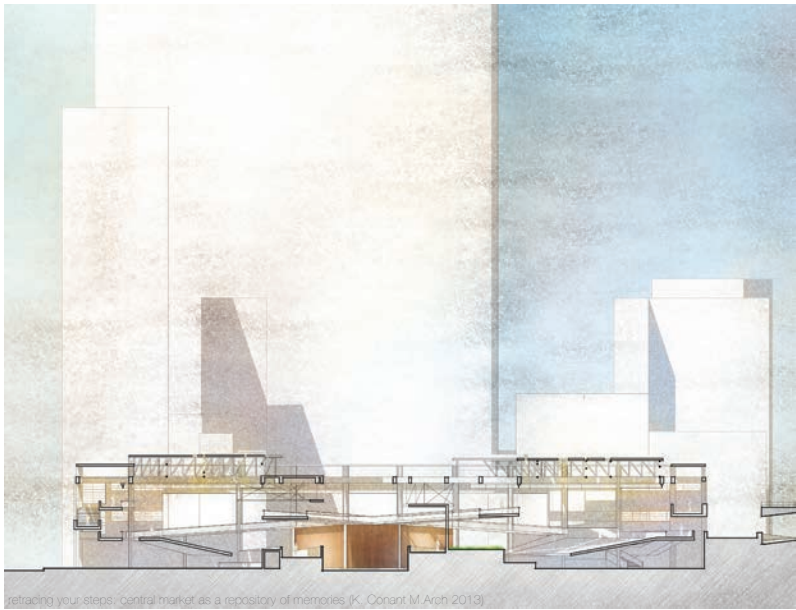


HONG KONG EXPRESS: M. ARCH. DESIGN RESEARCH STUDIO WENTWORTH INST. OF TECHNOLOGY

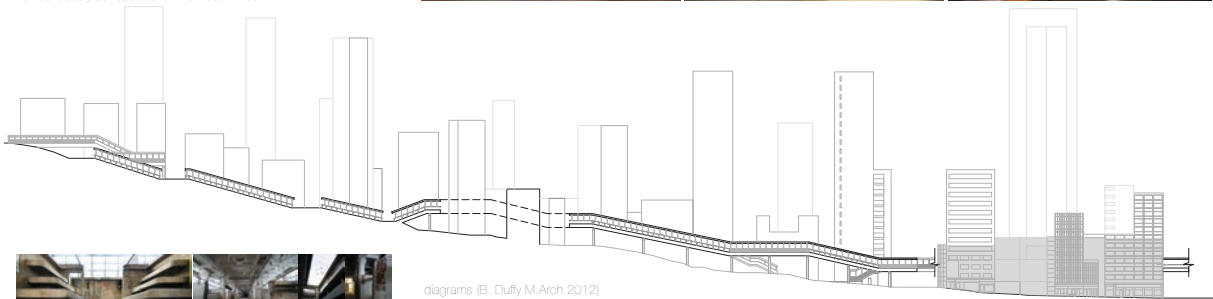


participants:
2012: S. Akarblom,
J. Bento, L. Brown,
K. Conant, K. Cruz,
S. Galvan, N. Gianetti,
R. Marshall, J. Meucci,
R. Michelson
2011: J. Augustas,
B. Duffy, L. Fortunato,
L. Joseph, A. Martin,
I. Robinson, C. Rogers,
E. White, Z. Wu.
studio critic:
Jennifer Lee
Michaliszyn

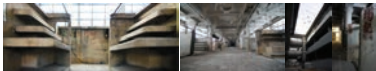
The studio explored the architecture and urbanism of Hong Kong through the medium of film, and experimented with the use of short movies as the generator for architectural design. We began the semester with a study of the work of Hong Kong filmmaker Wong Kar-wai. Wong's movies are characterized by the use of devices such as repetitive loops of scenes and music, stop-motion and narrowly framed views. Devices with which he captures the tight spaces, textured layers and speed that characterize that city. Wong's work is also marked both by the energy and ebullience for the future characteristic of newer econo-mies, and also (or because of its constant re-generation,) a nostalgia for the recent past. While in Hong Kong, the students recorded their site observations through the making of very short digital movies. The translation of those movies into "three-dimensional storyboards" (conceptual and spatial physical models) guided the development of a specific program framed loosely as "Spaces for the Recent Past."



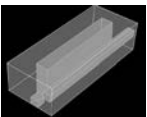
retreating your steps, central market as a repository of memories (K. Conant M Arch 2013)



diagrams (B. Duffy M Arch 2012)
site section (L. Joseph M Arch 2012)



Hong Kong's Central Market is located in the central business district of Hong Kong, home to all major financial and government institutions. It lies at the base of the Mid-level escalators, the world's longest open air escalator, and plugs into the multi-level public infrastructure of a vast footbridge network and the upper level of several shopping malls. It is possible to disembark the cross-harbor ferry and walk to and through the Central Market all the way to the mid-levels without once touching the traditional street. Central Market housed a wet market (meat and vegetables) for over sixty years before it was shuttered in 2003. The modernist concrete steel frame building was built in 1939, its footprint is the size of an American football field and it stands three and a half stories tall. The site has hosted a marketplace for over a century, the current building is the fourth to occupy the site. Earlier buildings were built and demolished in 1842, 1857 and 1895. Furthermore, it lies on the old boundary between Central and Sheung Wan, the former European and Chinese settlements. In the late eighties and nineties, the building was connected to the podium level public network that connects Central and the Mid-level escalators. After standing vacant for almost ten years, the building was slated for demolition and redevelopment. However, the public passageway was sealed off from the abandoned building and remained in use. The Central Market has been the subject of the city's public discourse on authenticity in the urban realm, and the site of opposing claims to public space.



However, the public passageway was sealed off from the abandoned building and remained in use. The Central Market has been the subject of the city's public discourse on authenticity in the urban realm, and the site of opposing claims to public space.



filmstrip, programmatic jumpouts (J. Meucci M Arch 2013)

