

# A Small Town Economic Catalyst

**Mo Zell**

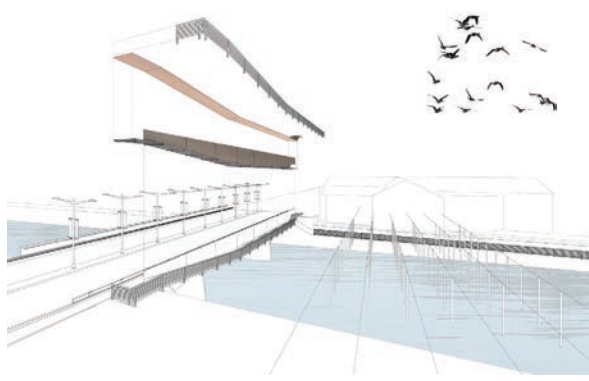
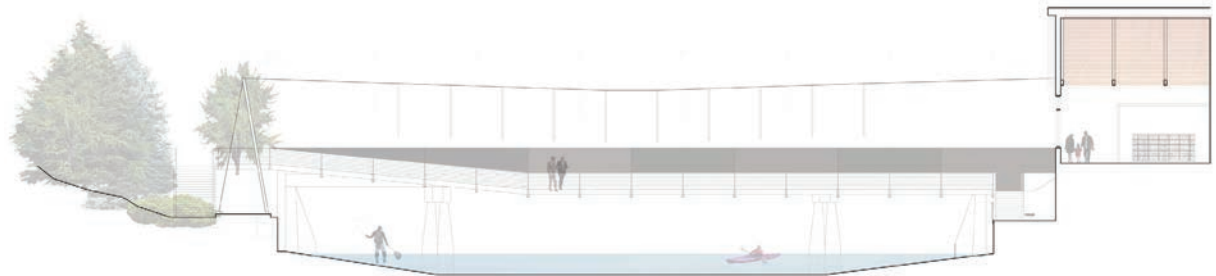
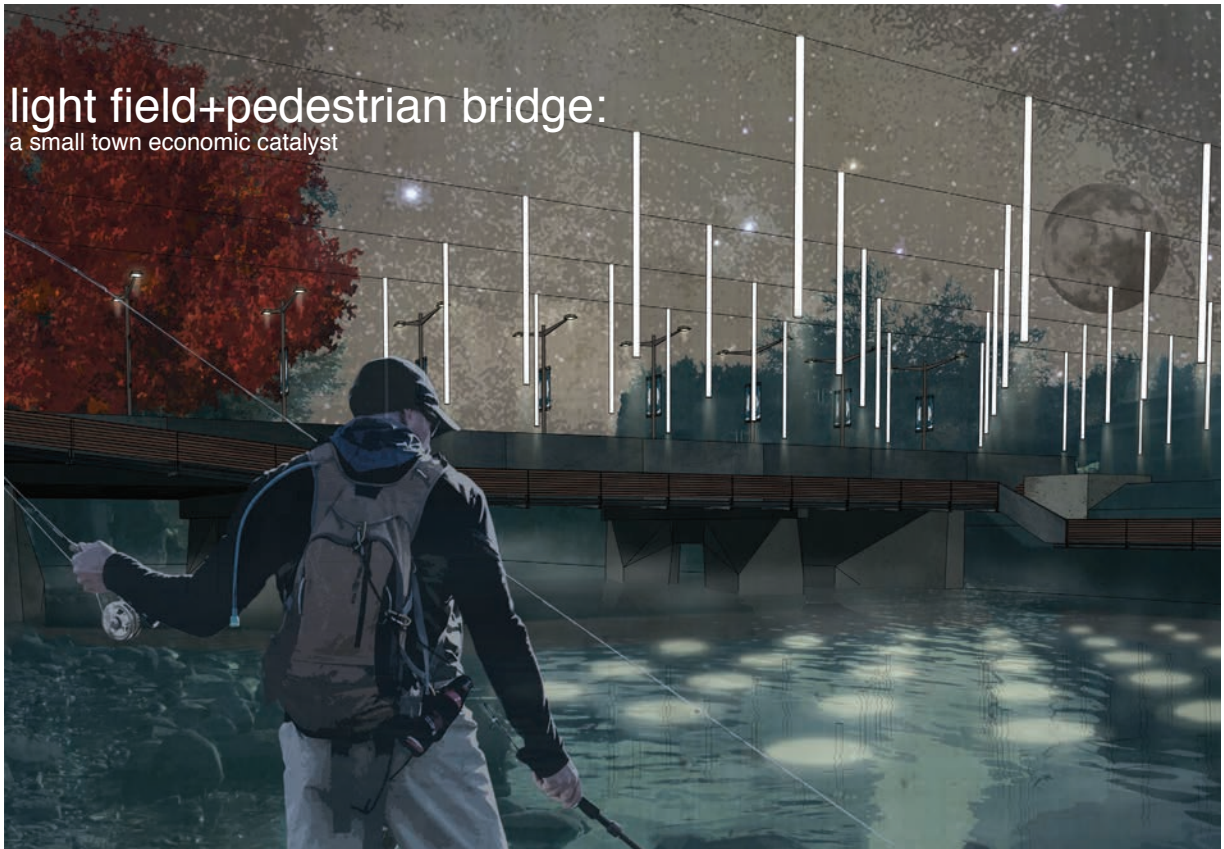
University of Wisconsin-Milwaukee

Fox River – be they commercial or recreational. Citizens fished, bathed and boated on its shores. Economically and culturally Waterford has gained much through the alliance. This relationship, however, also has a dubious component. The Main Street Bridge is one of the few crossing points over the Fox River. This condition results in the disproportionate funneling of heavy, ‘through’ traffic in downtown.

PARASITE + FOIL: Our design stunts the ‘drive-thru’ condition with two devices: a new pedestrian bridge attached to the DOT (Department of Transportation) bridge – a healthy parasite - and a field of light tubes hovering above the water. The light tubes act as a foil to the moving car. The lenses, polycarbonate cylinders wrapped with two layers of stainless steel wire mesh, are visible during the day to draw attention from pedestrians and cars crossing the bridge while at night the lenses cast light onto the water surface below, flickering as the water moves or a breeze sways the cylinder. The pedestrian bridge capitalizes on being near the water. Instead of hovering above, the wood and steel parasite structure dips close to the water, physically and visually engaging the river. These gestures are meant to stimulate additional investment and activity in the area.

# light field+pedestrian bridge:

a small town economic catalyst



Historically, activities in Waterford revolved around the Fox River – be they commercial or recreational. Citizens fished, bathed and boated on its shores. Economically and culturally Waterford has gained much through the alliance. This relationship, however, also has a dubious component. The Main Street Bridge is one of the few crossing points over the Fox River. This condition results in the disproportionate funneling of heavy, 'through' traffic in downtown.

**PARASITE + FOIL:** Our design stunts the 'drive-thru' condition with two devices: a new pedestrian bridge attached to the DOT (Department of Transportation) bridge - a healthy parasite - and a field of light tubes hovering above

the water. The light tubes act as a foil to the moving car. The lenses, polycarbonate cylinders wrapped with two layers of stainless steel wire mesh, are visible during the day to draw attention from pedestrians and cars crossing the bridge while at night the lenses cast light onto the water surface below, flickering as the water moves or a breeze sways the cylinder.

The pedestrian bridge capitalizes on being near the water. Instead of hovering above, the wood and steel parasite structure dips close to the water, physically and visually engaging the river. These gestures are meant to stimulate additional investment and activity in the area.

## Indigenous Fish Species



Open